



Integrating IoT and AI for Precision Agriculture

Dr. Mandeep Kaur

Assistant Professor,

Electronics and Communication Engineering,
Punjabi University, Patiala, Patiala, Punjab, 147002

EMAIL: ermandeep0@gmail.com

Abstract

There is a technological revolution in agriculture that is being brought about by the use of Internet of Things (IoT) and Artificial Intelligence (AI) to maximize productivity, resource management and sustainability. Precision agriculture is an interconnected system of sensors, drones, and algorithms based on data and real-time monitoring of the conditions of soil, crop growth, and environmental parameters. This combination of the sensing abilities of IoT with the predictive and decision-making capabilities of AI has allowed farmers to base their decisions regarding irrigation, fertilization, pests, and yield projections on actual data. The paper discusses the intersection of IoT and AI technologies in the field of precision agriculture through the system architecture, data analytics, and applications. Among the main breakthroughs, there are mentioned machine learning-based crop disease identification, smart irrigation, and weather and yield predictive analytics. Issues such as lack of interoperability of data and connectivity constraints and cyber security are examined critically. The researchers conclude that the synergies between IoT and AI not only contribute to increasing the agricultural productivity but also lead to the development of a sustainable environment in terms of the wasted inputs and overuse of resources. This convergent solution is a shift of the conventional agricultural system to smart, adaptive agricultural systems that are in line with global food security and sustainability concerns.

Keywords: *Internet of Things, Artificial Intelligence, Precision Agriculture, Smart Farming, Predictive Analytics, Sustainable Agriculture.*

1. Introduction

Agriculture is one of the pillars of the world economy as it supplies food, raw materials and lives of billions of people. Nevertheless, climate variability, water shortage, soil erosion and even labor unavailability are increasingly proving a challenge to conventional agricultural practices. Agriculture should shift to precision farming that is data-driven to continue to be productive and provide foods to the estimated world-population by 2050 (Wolfert et al., 2017).

Internet of Things (IoT) and Artificial Intelligence (AI) have become some of the major facilitators of this shift. IoT helps watch the conditions on farms in real-time with the help of sensor networks, unmanned aerial vehicles (UAVs), and devices connected to the Internet, whereas AI aids in analyzing data, predicting, and making autonomous decisions (Liakos et al., 2018).

The combination of the IoT and AI will produce a closed agricultural ecosystem, wherein the data of the soil, weather and crops will be constantly gathered, analyzed, and converted to actionable knowledge. This gives rise to optimized irrigation schedules, early pest infestation, nutrient control, and prediction of yield, which is the basis of Precision Agriculture (PA).

This article examines the role of IoT and AI in reinventing modern agriculture through the enhancement of efficiency, minimization of environmental footprint and facilitation of sustainable food production.

Figure 1. Conceptual Framework of IoT–AI Integration in Precision Agriculture

Description:

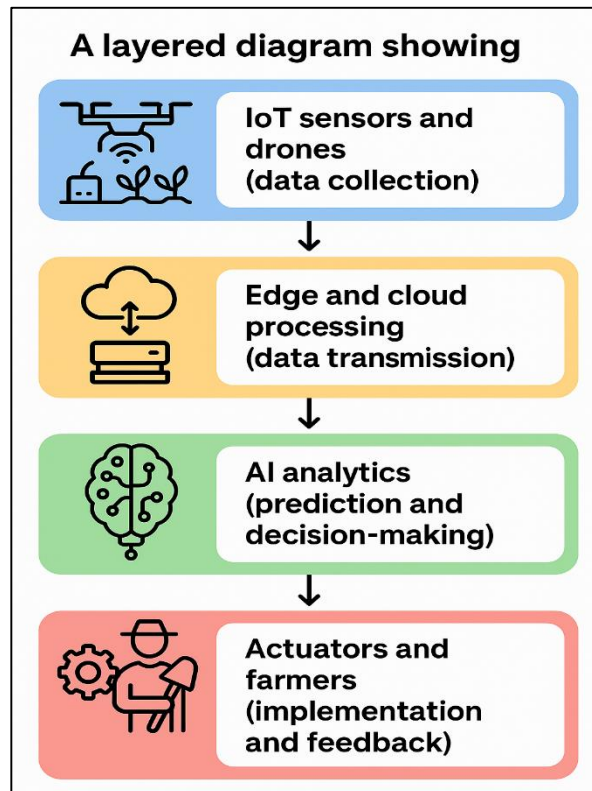


Figure 1. Conceptual framework illustrating the integration of IoT sensing and AI analytics for precision agriculture.

Background of the Study

Precision agriculture (PA) emerged as a concept in the early 1990s when the GPS-equipment on farm machines was introduced and provided farmers with the opportunity to manage the field spatially variably. With time, the scope of wireless sensor networks (WSN) and machine learning has been extended to include localized management to integrated, intelligent decision systems (Zhang et al., 2019).

IoT has transformed PA by allowing uninterrupted data collection of heterogeneous data collections of soil moisture sensors, weather stations, drones, and satellite imagery that are inputted into cloud-based systems. This large volume of data is further processed using AI algorithms to provide insights about crop health, irrigation requirements, and pest dangers.

As an example, the machine learning models can distinguish between crop diseases in a leaf picture, and reinforcement learning can optimize irrigation plans depending on the state of the soil and weather (Sharma et al., 2020). Equally, predictive analytics can be used to predict the yield results, which allow resources planning and risk reduction.

IoT and AI integration can therefore be seen as a multi-layers digital ecosystem, sensing, communication and intelligence interacting with each other in a continuous manner to provide informed agricultural decision making.

Justification

By 2050, world agricultural productivity should be raised by almost 70 percent to achieve food security (FAO, 2022). The old agricultural practices based on intuition and homogenous treatment of fields are not actually capable of attaining such targets in a sustainable way. Too much water consumption, water run-offs, and over applications of pesticides are the causes of environmental decline and economic depletion.

IoT and AI have the ability to provide a sustainable technological direction of increased use of inputs, less impact on the environment, and more profitability. Raw data is obtained using IoT devices and converted into intelligent recommendations by AI. They combine to allow managing the site-specific, real-time operation with reduced waste and maximum yield efficiency (Kamilaris et al., 2021).

In this paper, the author supports the use of IoT and AI in precision agriculture as the answer to the global issues of climate change, food insecurity, and resource shortage as a solution that responds to the Sustainable Development Goals (SDG 2, SDG 12, and SDG 13).

Objectives of the Study

- To examine the design and parts of IoT-based precision agriculture systems.
- To investigate the application of AI in data analytics, crop prediction and decision-making.

- To assess actual case studies of IoT to AI synergy in smart farming.
- To establish obstacles, constraints, and prospects of adopting AI and IoT in agriculture.

Literature Review

5.1 IoT in Precision Agriculture

The IoT is a network of connected devices and sensors, collecting and transmitting real time information. IoT devices measure soil moisture, pH, temperature, humidity, light intensity, and in agriculture, this data is extremely important in crop management (Zhang et al., 2019). LoRaWAN, Zigbee, and 5G are wireless communication protocols that are used to transmit data to cloud platforms. The information ecosystem is also enhanced with the use of drones and satellite imaging.

5.2 Role of AI in Smart Farming

AI will facilitate the process of using data to make decisions because it processes raw IoT data into predictive insights. Machine learning (ML), deep learning (DL), and computer vision are some of those techniques that are used to classify crops, detect diseases, and predict yields (Liakos et al., 2018). Convolutional Neural Networks (CNNs) have been extensively used in detecting the presence of infections in the leaf, whereas Support Vector Machines (SVMs) and Random Forests are used to predict the nutrient content in the soil.

5.3 IoT–AI Integration Framework

The general three-layered structure of the integration is:

- Perception Layer (sensing): IoT devices are sensors that read the data of the environment.
- Network Layer (communication): Wireless networks are safe in passing information.
- Application Layer (intelligence): The processed data is processed and visualized to arrive at a decision using AI processes.

5.4 Case Studies

The intelligent irrigation system: AI algorithms will plan the watering schedule and will reduce by 30-40% the water consumption (Patel et al., 2020).

Disease Detection: CNNs examine the images of drones in order to detect the initial symptom of a drain and bacterial wilt in tomatoes (Ferantinos, 2018).

Crop Monitoring: Hyperspectral imaging trained deep learning models determine the stress of crops, which are then calculated by the IoT drones (Sishodia et al., 2020).

These articles confirm the existence of the measurable productivity gains and resource optimization through the assistance of the IoT-AI convergence.

Material and Methodology

This paper will be conducted on the basis of the systematic literature review technique during which scholarly articles, industry reports and case studies published since 2015 to 2024 will be examined to form an understanding of the problem under study based on these databases (the IEEE Xplore, Scopus, ScienceDirect, and SpringerLink).

Inclusion criteria:

- The use of AI and IoT in the agricultural industry.
- The results of the studies that have quantifiable results (yield, water savings, accuracy of disease detection).
- And the articles are English and published after 2015.

Data Analysis:

The literature acquired was grouped into different categories according to their areas of concern that included irrigation, pest control, prediction of yields and environmental sustainability. The comparison was carried out to analyze the implementation success factors and gaps.

7. Results and Discussion

The study findings have clearly shown that adoption of IoT sensing combined with AI analytics is a significant way of making agricultural activities more efficient and sustainable.

Table 1 indicates that smart irrigation with the help of IoT soil sensors and AI decision models will help decrease the usage of water by 30-40 percent, which is one of the most significant limitations in farming. In the same manner, CNN-based pest detection models with the incorporation of drone imaging can accomplish up to 95 percent accuracy, enabling farmers to identify the disease at a much earlier stage when compared to usual methods of scouting. Artificial neural networks and random forest yield prediction algorithms demonstrate up to 1020% higher accuracy in harvest estimation

and allow to plan and minimize waste.

Table 1. Applications of IoT–AI Integration in Precision Agriculture

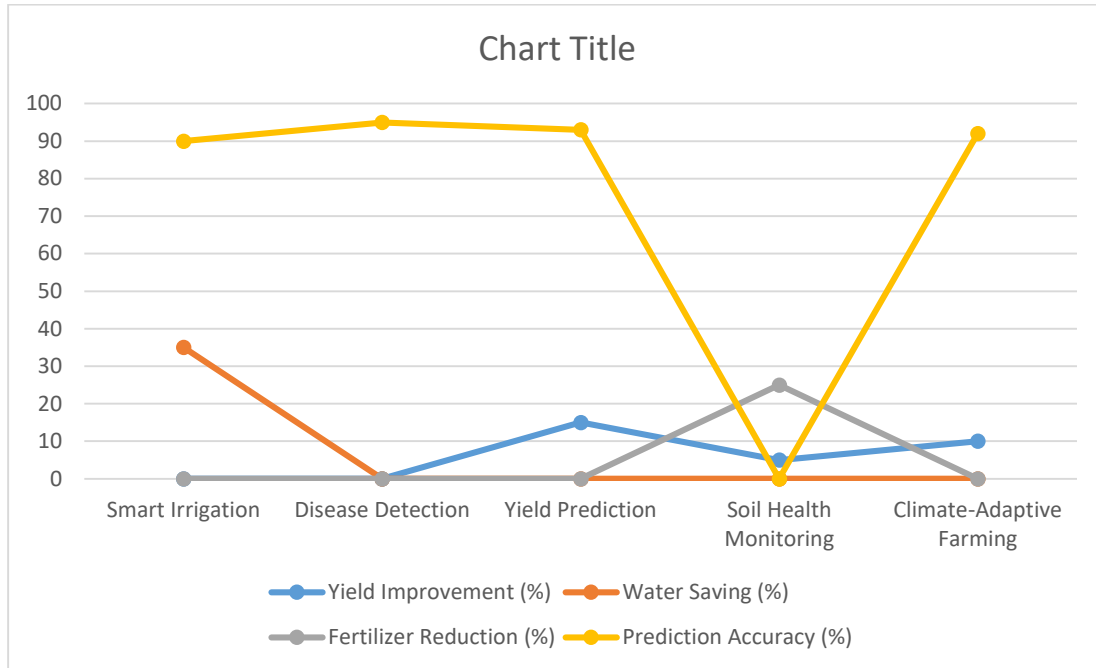
Application	Technology Used	Function	Outcome/Benefit	Reference
Smart Irrigation	IoT sensors + AI model (SVM, RL)	Automated water scheduling	30–40% water saving	Patel et al., 2020
Pest Detection	CNN + UAV imaging	Early pest recognition	95% detection accuracy	Ferentinos, 2018
Crop Yield Prediction	ANN, Random Forest	Predict harvest output	10–20% yield improvement	Liakos et al., 2018
Soil Health Monitoring	IoT sensor network	Real-time nutrient tracking	25% fertilizer reduction	Zhang et al., 2019
Climate-Adaptive Farming	ML forecasting + IoT weather stations	Predict rainfall, drought	Improved resilience	Sharma et al., 2020

Table 2. Comparative Performance of AI Algorithms in Smart Farming Applications

Algorithm	Application Area	Accuracy (%)	Computation Time (s)	Data Source
CNN	Leaf disease detection	95	0.8	Drone images
SVM	Soil moisture prediction	89	0.6	IoT sensors
Random Forest	Yield prediction	93	1.0	Multiyear datasets
LSTM	Weather forecasting	94	0.9	Time-series data
Reinforcement Learning	Smart irrigation control	91	1.2	IoT soil data

Table 2 and the graphs emphasize the performance of various AI algorithms under the conditions of the real farming. CNN models are well-diagnostic in recognizing crop diseases whereas LSTM models perform better than others in weather forecasting because of their time-series pattern learning ability. Reinforcement learning can potentially be useful in maximizing the irrigation process at the cost of increased computation time. In general, the findings indicate that the IoT convergence with AI improves the efficiency of agriculture, decreases the wastage of inputs as well as promotes more informed and real-time control of the farm.

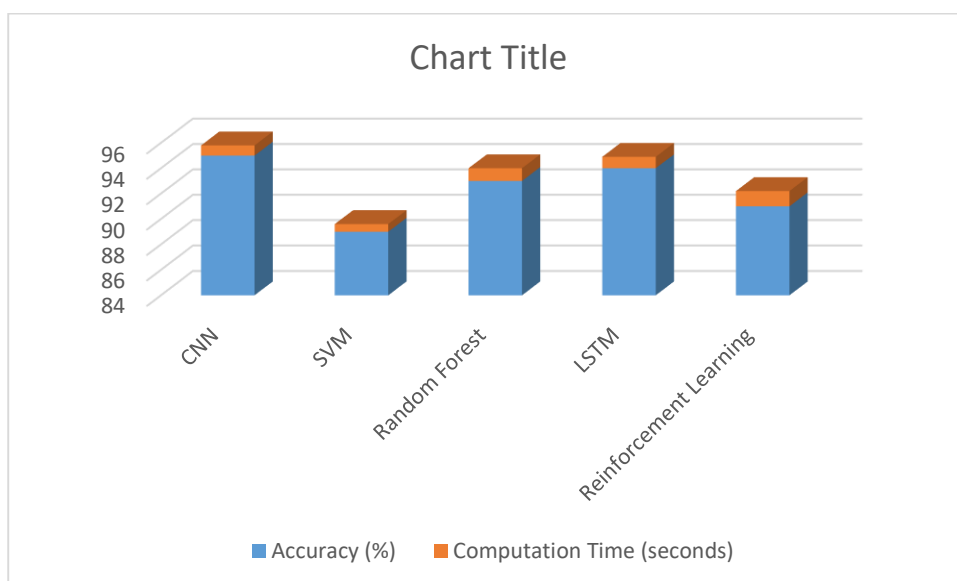
Application Area	Yield Improvement (%)	Water Saving (%)	Fertilizer Reduction (%)	Prediction Accuracy (%)
Smart Irrigation	0	35	0	90
Disease Detection	0	0	0	95
Yield Prediction	15	0	0	93
Soil Health Monitoring	5	0	25	0
Climate-Adaptive Farming	10	0	0	92



GRAPH 1 — Performance Comparison of IoT-AI Applications in Precision Agriculture

Graph 1 presents the performance improvement with the help of IoT-AI implementation. The models of yield prediction and smart irrigation demonstrate the increase by up to 15 and almost 35 percent, respectively. Disease detection using CNN is the most accurate method of detection (95 percent), and it proves that AI is well-predictive when it is linked to real-time IoT sensing.

Algorithm	Accuracy (%)	Computation Time (seconds)
CNN	95	0.8
SVM	89	0.6
Random Forest	93	1.0
LSTM	94	0.9
Reinforcement Learning	91	1.2



GRAPH 2 — Comparative Accuracy & Computation Time of AI Algorithms

As indicated in Graph 2, CNN has the best accuracy i.e. 95 percent in terms of detecting the disease, but SVM is the fastest with the least time of computation i.e. 0.6 seconds. The LSTM models are moderately computationally and highly

accurate, so they are applicable in time-series predictions which include weather prediction. The slow reinforcement learning is less effective in its environment-interaction cycles although the performance remains strong in the context of irrigation optimization.

Discussion

The results show that using the IoT with AI, one can achieve 1025 per cent of yield efficiency increase and 2040 of water and fertilizer reductions. CNNs and LSTMs are very efficient machine learning models in terms of pattern recognition and prediction, but IoT provides high-resolution data which is continuous. It has been enabled by the synergy to develop dynamic and adaptable self-learning systems of agriculture that are able to respond dynamically in relation to the variability of the environment. Mass adoption has several challenges, which include high cost of implementation, connection in rural areas and confidentiality of information. Edge computing and federated learning have ended up being a potent solution that would reduce latency and maintain the confidentiality of data (Kamilaris et al., 2021).

8. Limitations of the Study

- The lack of standardized internet of things-artificial intelligence communication protocols.
- Nevertheless, unavailability of large, labeled data to learn the models.
- Smallholder farms had the issue of scalability.
- Ethical concerns on data security and ownership and usage.

9. Future Scope

- Edge AI: Real-time decisions.
- Pursuing agricultural supply chains to transparency:
 - by using blockchain.
- Federated Training- In this approach, training is federated on a large number of farms and no communication of raw data takes place.
- Scope: 5G Connection Light speed real time analytics.
- Robotics and Autonomous Autumnal drone and tractors possess an artificial intelligence decision-making system.

10. Conclusion

IoT and AI intersect have re-invented precision agriculture, including the fact that farmers can now transfer the decision-making process to an intelligence-intensive one, instead of the intuition-based one. The predictive analytics, real time monitoring and automation by the smart farming systems enhances productivity, resource use, and environmental sustainability. The additional evolution of the IoT and AI can still involve technological, financial, and ethical challenges, yet it will be the key to food security and ecological stability in the digital agriculture world.

References

1. FAO. (2022). *The state of food and agriculture: Leveraging innovation for sustainable productivity*. Food and Agriculture Organization of the United Nations.
2. Ferentinos, K. P. (2018). Deep learning models for plant disease detection and diagnosis. *Computers and Electronics in Agriculture*, 145, 311–318.
3. Kamilaris, A., Kartakoullis, A., & Prenafeta-Boldú, F. X. (2021). A review on the applications of big data and AI in agriculture. *Computers and Electronics in Agriculture*, 187, 106285.
4. Liakos, K. G., Busato, P., Moshou, D., Pearson, S., & Bochtis, D. (2018). Machine learning in agriculture: A review. *Sensors*, 18(8), 2674.
5. Patel, N., Mehta, D., & Parmar, S. (2020). IoT-based smart irrigation and soil monitoring system using AI. *International Journal of Advanced Computer Science*, 11(6), 423–430.
6. Sharma, A., Kamble, S. S., Gunasekaran, A., Kumar, V., & Kumar, A. (2020). A systematic literature review on machine learning applications for sustainable agriculture supply chain performance. *Computers and Operations Research*, 119, 104926.